

2023 ANNUAL REPORT



Representative Tarik Khan visits Education Plus Health's SBHC at CB Community School in the Roxborough neighborhood of Philadelphia.



Valley Health Partners SBHC ALLENTOWN, PA



Wright Center SBHC SCRANTON, PA



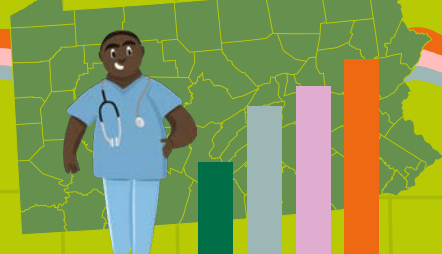
NEPA SBHC SUSQUEHANNA COUNTY

PSBHA LEADERS visited the Wright Center's SBHC in Scranton, NEPA's SBHC in Susquehanna County, Valley Health Partners' SBHC in Allentown and Greater Philadelphia Health Action's SBHC at Cristo Rey High School in Philadelphia, to see the great work and continue to learn from each other.

ADVOCACY



PSBHA USHERED IN 2023 with School-Based Health Awareness Month in February meeting with legislators and staff across the state joined by the SBHC operators in their area to share local stories on impact. Legislators, State leaders, and PSBHA continue to visit SBHCs to see the impact they're having.



BASIC EDUCATION FUNDING COMMISSION INVITES PSBHA TO TESTIFY

The **Basic Education Funding Commission** was created after Judge Jubelirer ruled in February 2023 that Pennsylvania does not adequately or equitably fund public education. In September, Julie Cousler was invited to testify before the Commission. Julie testified that one of the best ways to increase educational equity in Pennsylvania was to increase health equity. Living in poverty, experiencing trauma and living within a gun violence epidemic in many parts of the state, along with the pandemic socially isolating students for two years, led to a mental and physical health crisis. She concluded her testimony saying, "And we all know that the best place to provide these services for children and adolescents is where they spend most of their time- their school."

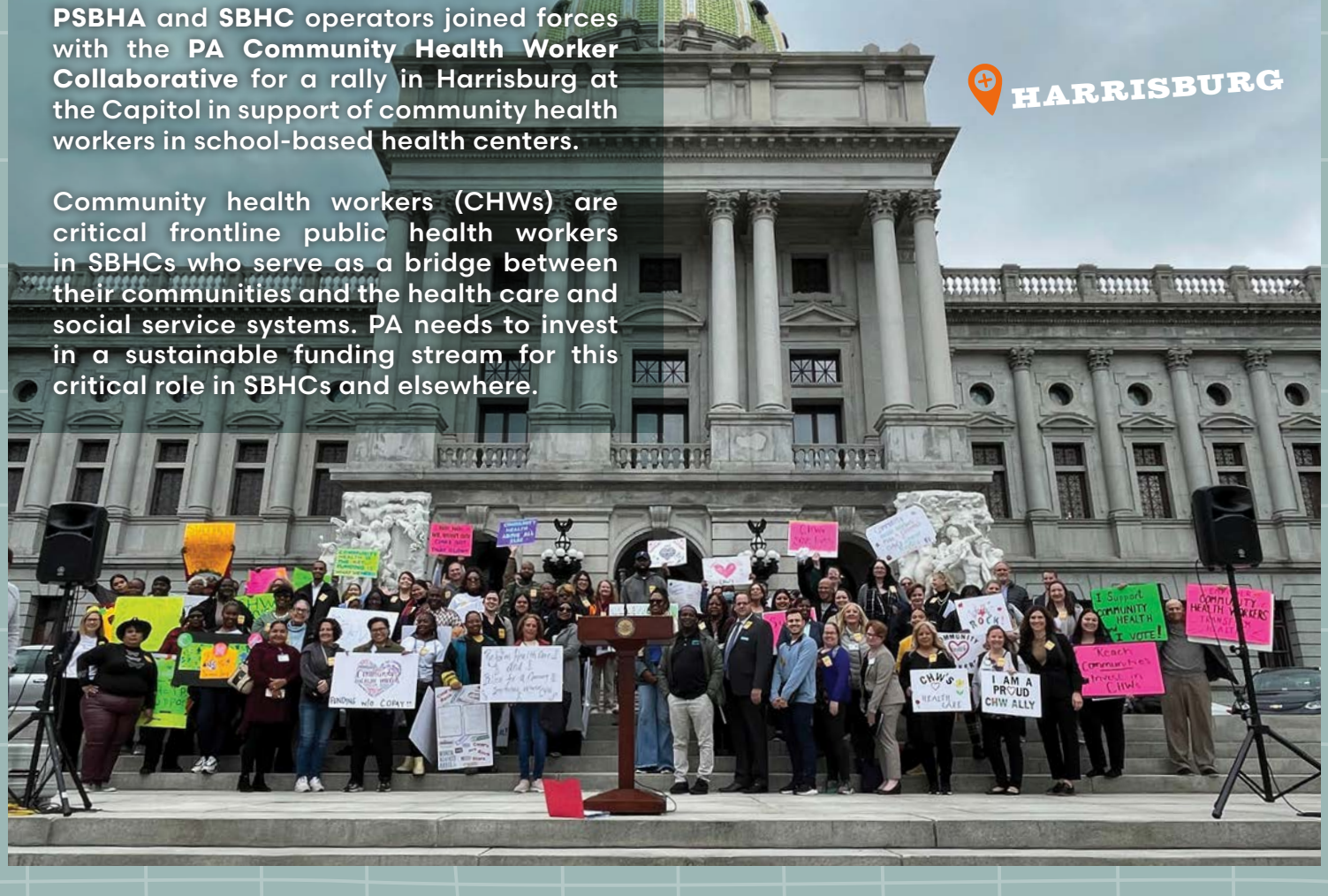


PSBHA Executive Director **Julie Cousler** provided testimony to the Basic Education Funding Commission about the critical need to invest in SBHCs to invest in student health for better educational outcomes.

#TUESDAYTAKEOVER WITH COMMUNITY HEALTH WORKERS

PSBHA and SBHC operators joined forces with the **PA Community Health Worker Collaborative** for a rally in Harrisburg at the Capitol in support of community health workers in school-based health centers.

Community health workers (CHWs) are critical frontline public health workers in SBHCs who serve as a bridge between their communities and the health care and social service systems. PA needs to invest in a sustainable funding stream for this critical role in SBHCs and elsewhere.



HARRISBURG

SBHCS GATHER IN WASHINGTON DC



PSBHA and SBHC operators met in Washington DC to attend the national conference hosted by the **School-Based Health Alliance**. Teams were there from Family First SBHC in York, Greater Philadelphia Health Action in Philadelphia, Education Plus Health in Philadelphia, and Union Community in Lancaster. The theme was Celebrating and Growing the Workforce, hosted at American University and was a great couple of days of networking, learning and advocating.

SBHC DATA HUB SPOTLIGHT

With the \$2.85 million Health Equity grant from the Pennsylvania Senate, PSBHA launched the **SBHC Data Hub with Apex**. The 1st year data snapshot shows the scope and breadth of work being done across the state. [See it in full here.](#)



PSBHA IN THE NEWS

PSBHA released a joint statement with the **Pennsylvania Association of School Nurses and Practitioners (PASNAP)** stating strong disappointment that the State House and Senate recessed for summer without including critical health services for students in the FY23-24 budget. [Read the full statement here.](#)

School-Based Health Centers Boost Academic Success, But Lack State Funding in Pennsylvania, Bucks County Beacon. [Read the article here.](#)



PSBHA HOSTS BACK TO SCHOOL SEMINAR

In September to kick off a new school year, PSBHA hosted the seminar, **SBHCs Impact on Public Education and Benefits to Pennsylvania's Students**, which reviewed the resources, stress, and data experienced by our students and school staff alike that have amplified the need for SBHC support in Pennsylvania. PSBHA board member and humanature Founder Michael O'Bryan and Education Plus Health's Deputy Director Ashley McGrath spoke on the state of affairs and tools and resources for a better path forward.



PSBHA BOARD HAPPENINGS

PSBHA Board Chair **Elizabeth Porth**, PhD stepped down from the board in 2023. As a board member, then chair from the beginning, we thank her for her leadership and expertise.

Dr. Elizabeth Miller stepped into the role of Board Chair. As an adolescent medicine physician and longtime fierce advocate of SBHCs, she is leading PSBHA and SBHCs into a new era of impact in PA. (pictured left)

Michael O'Bryan joined the board this year. As the founder of humanature, an organizational design strategy firm, Michael works with non-profits, businesses and leaders on how they understand, support human development, interaction, and performance. Along with his background and passion for working in historically excluded communities, Michael is a great addition to the PSBHA board. (pictured right)



PSBHA BOARD MEMBERS

- Elizabeth Miller, M.D., Ph.D.,** Chair
- Cliff Deardorff,** Treasurer
- Robin Rosencrans,** Secretary
- Lori Dever, MA**
- Daniel Taylor, D.O., FAAP**
- Lori Kelley, MSN, RN, CSN**
- Michael O'Bryan**

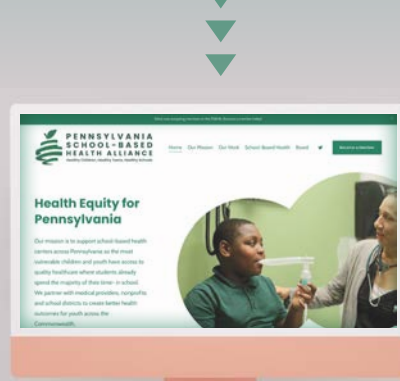
You can find our board members full biographies on the website, [here.](#)



CONTACT US

For more information, please contact **Julie Cousler** at julie@psbha.org

CHECK OUT OUR NEW WEBSITE



BECOME A MEMBER

Help us build a coalition of advocates to work with state and federal government allies. Every member contribution goes towards improving health and education outcomes for Pennsylvania's youth. Become a member as an individual, SBHC operator, or partner. [Join now.](#)

